



# Comparison of elastomer gaskets

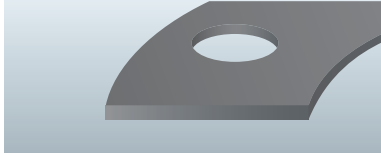
Product name

TOMBO™ No.  
**1050/1051**

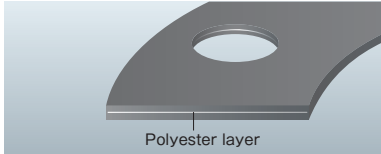
Elastomer cut gaskets



**TOMBO™ No.1050**  
This gasket is formed by cutting an elastomer sheet into the shape of a gasket.



**TOMBO™ No.1051**  
This gasket is formed by cutting an elastomer sheet reinforced with polyester layer into the shape of a gasket.



Construction

Features

● This gasket utilizes the elasticity, restoring ability and fitting ability of elastomer to realize good sealing performance under low contact pressure.

\* Because TOMBO™ No.1051 is reinforced with a polyester layer, the protrusion from the flange is small. However, this gasket is not suitable as a gas seal, because leakage due to permeation is liable to occur.

Service range

Service temperature range Depends on the elastomer material.  
Maximum service pressure 1.0MPa

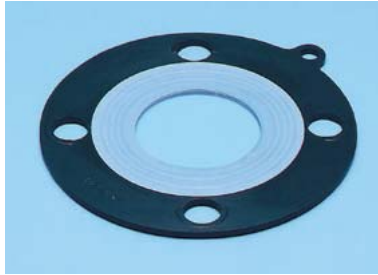
Lineup

For details of the elastomer materials, see P.58.

For details of the service temperature and standard dimensions, see P.60.

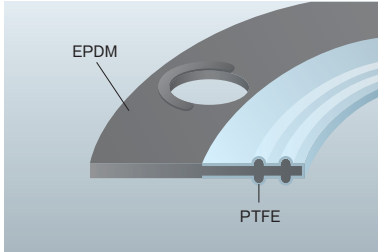
TOMBO™ No.  
**9013/9013-D**

EBILON™ gasket



Conforms to the Standards and criteria for food and food additives, etc. (3-D-2. Public Notice No. 370 of the Ministry of Health & Welfare, 1959) stipulated by the Food Sanitation Act  
\* This applies to PTFE film used on the face that is in contact with the fluid.

This gasket consists of an elastomer core integrated with a pressurized and heat-formed PTFE film.



● This gasket combines the elastomer with the corrosion resistance of PTFE, resulting in excellent sealing performance.  
● It is ideal for PVC pipes, glass-lined pipes and other applications where a large tightening force cannot be applied.

Service temperature range -30 - 150°C  
Maximum service pressure 2.0MPa  
Flange shape Full face

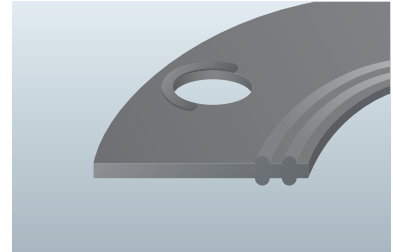
**TOMBO™ No.9013**  
Consists of EPDM covered with PTFE.  
**TOMBO™ No.9013-D**  
Consists of special EPDM for an electrolytic tank. Covered with PTFE.

TOMBO™ No.  
**9013-EP/-DEP**

EBILON™ gasket



Elastomer gasket pressure-formed to the shape shown below.



● This gasket realizes stable sealing performance under a lower contact pressure than that of an elastomer cut gasket.

\* This gasket is recommended for use at places where the service conditions are not harsh, and there is not much need for chemical resistance.

Service temperature range -30 - 150°C  
Maximum service pressure 1.0MPa  
Flange shape Full face

**TOMBO™ No.9013-EP**  
EPDM  
**TOMBO™ No.9013-DEP**  
Special EPDM for an electrolytic tank

For details of standard dimensions, see P.60.